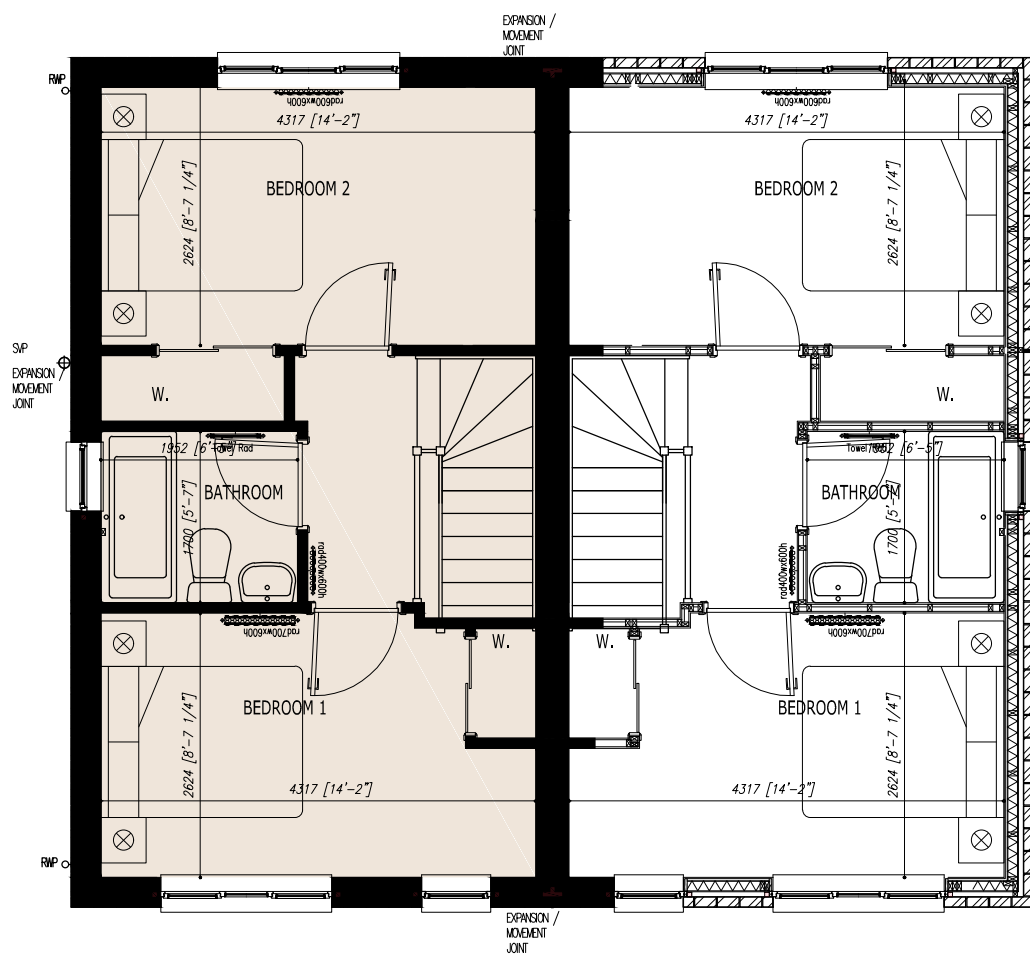
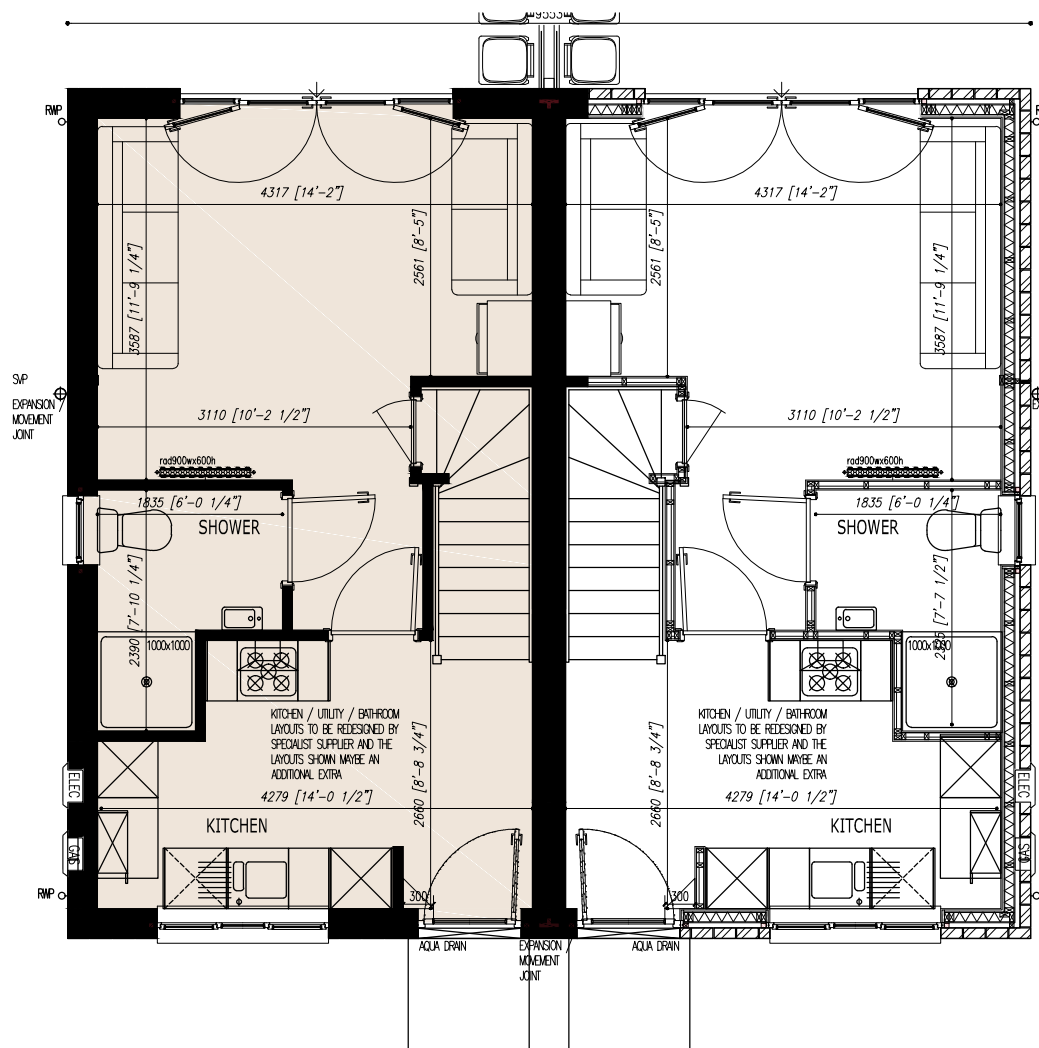


Artist Impression Only, Subject to Alteration Without Notice



Gross Internal Floor Area 68.0m² or 925.7sqft

GIFA figure includes loadbearing walls, partitions and voids
 All elevations are approximate, may alter without notice, and are not part of any contract
 All dimensions are taken to the longest size
 All dimensions are approximate, may alter without notice, and are not part of any contract
 All areas are approximate, may alter without notice, and are not part of any contract
 Kitchen layout is indicative
 Furniture and car on image are not included
 Detached garage is an optional extra

Rosewood House Type

Marshall St / Alexander St Wishaw

